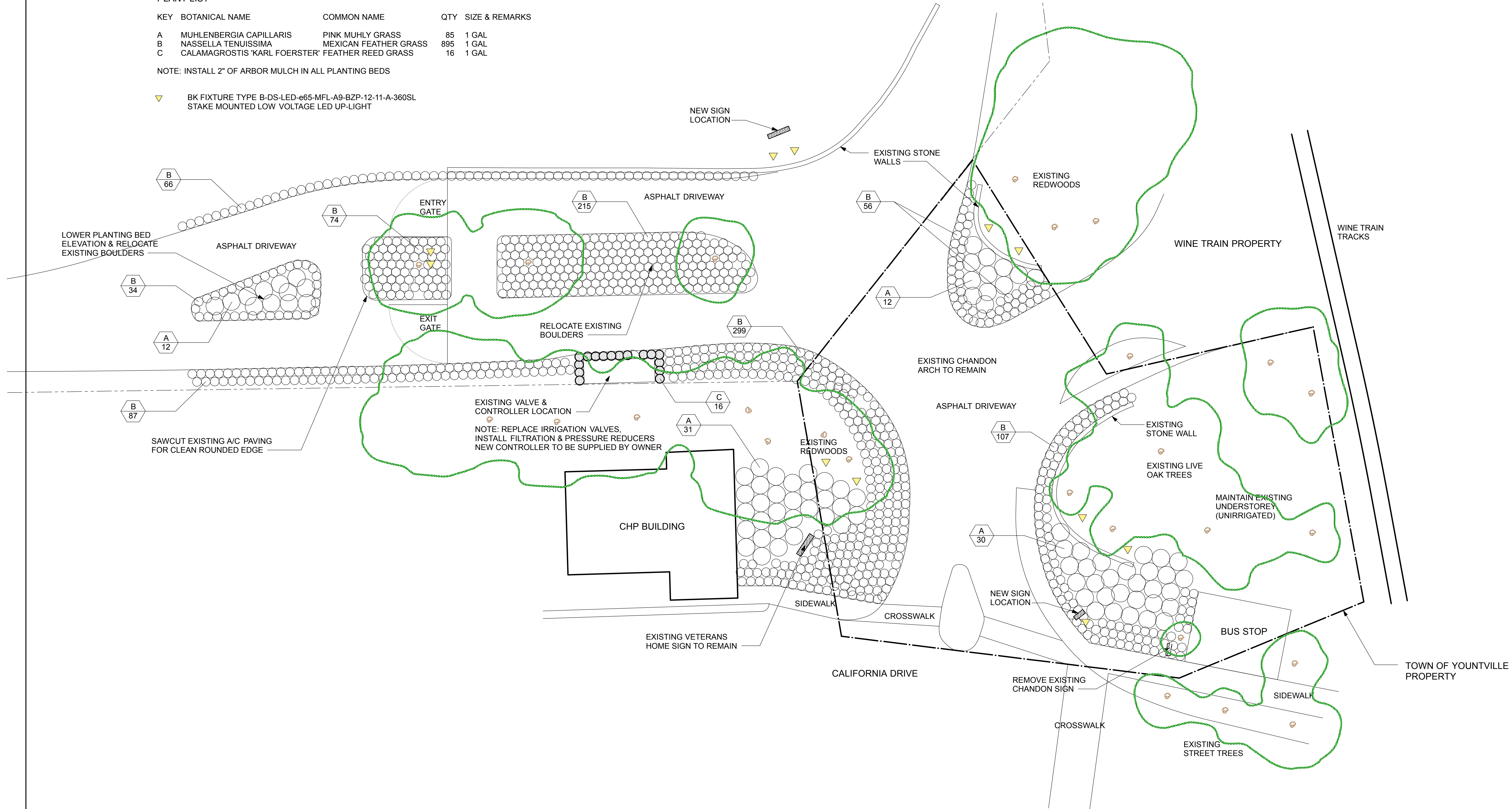


PLANT LIST

KEY	BOTANICAL NAME	COMMON NAME	QTY	SIZE & REMARKS
A	MUHLENBERGIA CAPILLARIS	PINK MUHLY GRASS	85	1 GAL
B	NASSELLA TENUISSIMA	MEXICAN FEATHER GRASS	895	1 GAL
C	CALAMAGROSTIS 'KARL FOERSTER'	FEATHER REED GRASS	16	1 GAL

NOTE: INSTALL 2" OF ARBOR MULCH IN ALL PLANTING BEDS

▽ BK FIXTURE TYPE B-DS-LED-e65-MFL-A9-BZP-12-11-A-360SL
STAKE MOUNTED LOW VOLTAGE LED UP-LIGHT

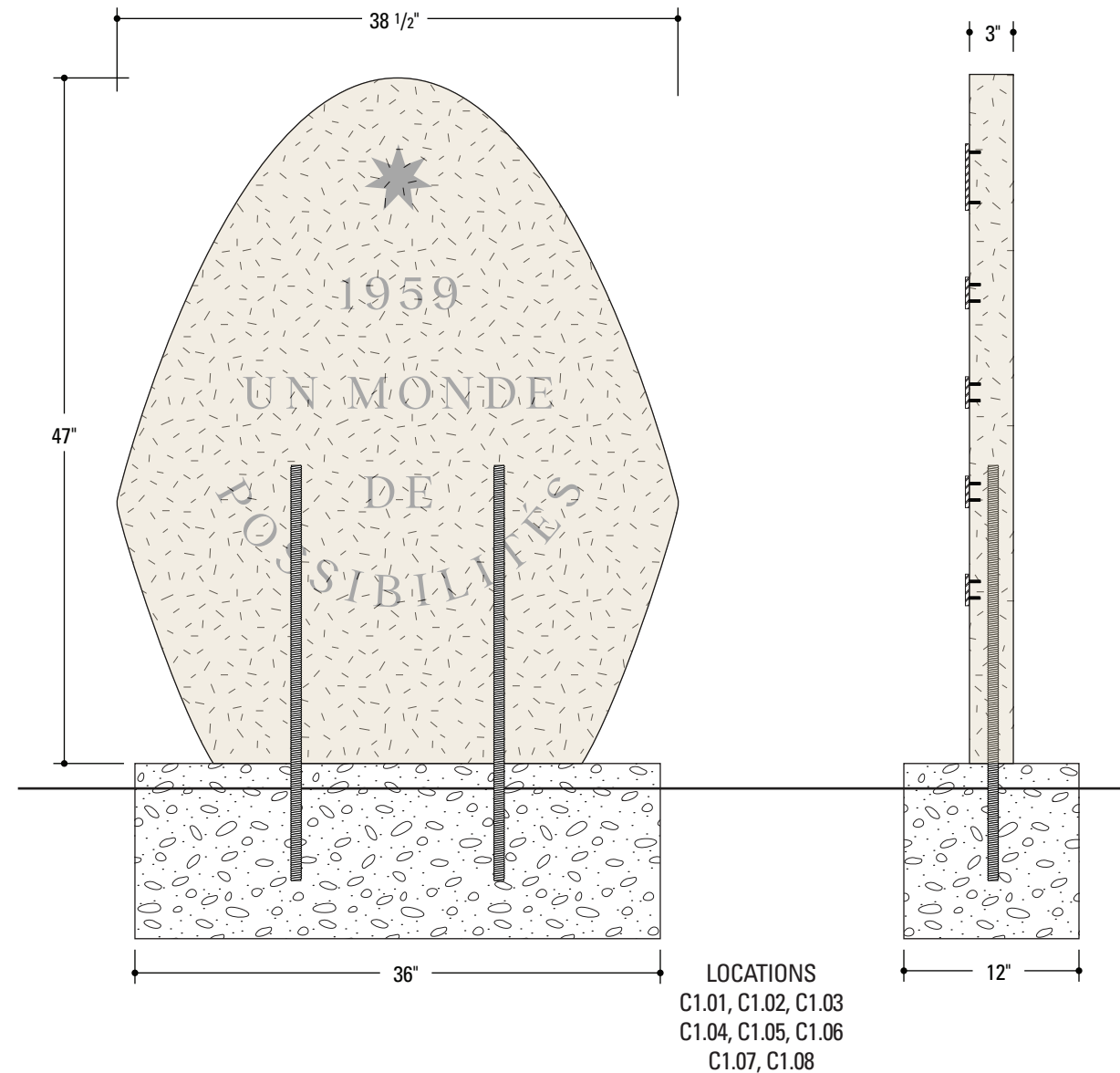


CHANDON
YOUNTVILLE, CA

MAIN ENTRY
PLANTING PLAN

COORDINATION	09.08.21
REVISIONS	09.20.21
REVISIONS	09.23.21
REVISIONS	12.16.21

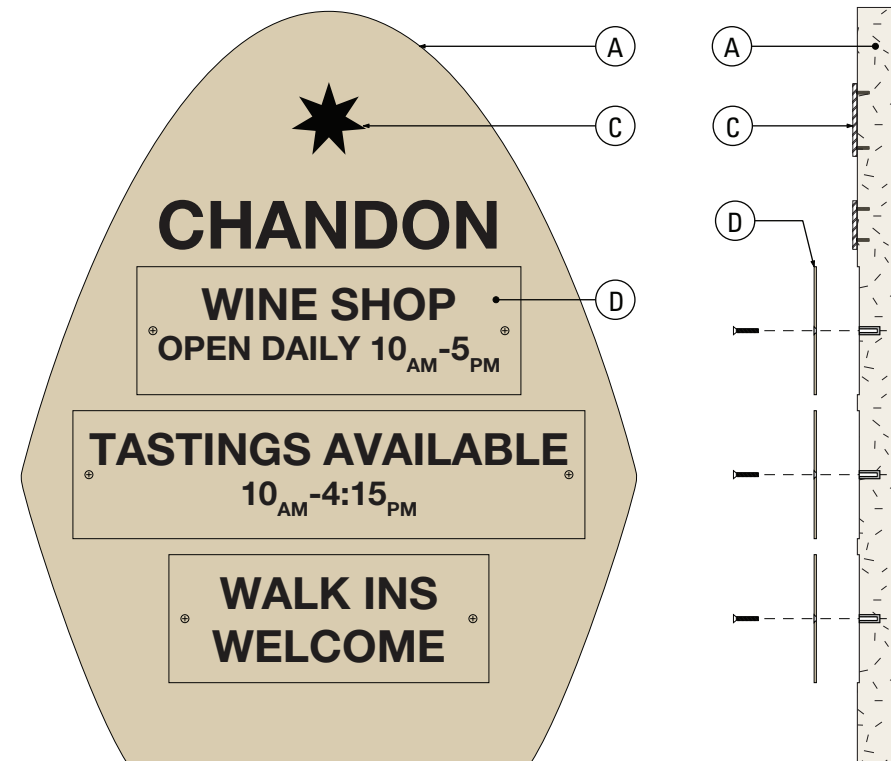
DATE:	12.16.21
SCALE:	1/16" = 1'-0"
DRAWN:	
CHECKED:	
SHEET:	



2 CI - Cement Information Sign - Construction Elevation
SCALE: 1" = 1'-0"



1 CI - Cement Information Sign - Typ. Layout
SCALE: 1" = 1'-0"



3 CI - Location CI-02 Details
SCALE: 1" = 1'-0"

CLIENT

CHANDON

LEGEND

A.

3" thick Prefabricated Concrete Monument 48" x 33-3/8" with allthread protruding from bottom. Allthread to be epoxied into holes in Embedment "B"

B.

Cast Concrete Embedment 12" x 36" x 12" deep, with holes to recieve allthread from "A". Location CI.02 will have (x3) recessed areas, 1/8" deep, to recieve removeable Message Panels "D".

C.

1/4" thick Steel Letters/symbols with Blackened Finish, pin mounted to face of "A".

D.

1/8" aluminm removeable Message Panels, painted to match Monument "A". With Black Vinyl graphics. Mechanically fastened to "A" with stainless steel socket drive bolts into threaded inserts.

JOB# / PROJECT NAME

221077 - Site Signage Location Plan

SHEET TITLE:

Concrete Informational Signs

VERSION / DATE

v.1.0 / 05.15.21

v.2.0 / 06.21.21

v.3.0 / 08.03.21

v.4.0 / 10.15.21

v.5.0 / 11.04.21

v.6.0 / 12.21.21

SCALE: As Shown

DRAWN BY: M. Lewis

PROJECT MGR.: K. Johnson

MARTINELLI ENVIRONMENTAL GRAPHICS

1829 EGBERT AVENUE | SAN FRANCISCO, CA 94124 | P. 415.468.4000 | F. 415.468.4009

SHEET:

D.02.00



CI.01



CI.02



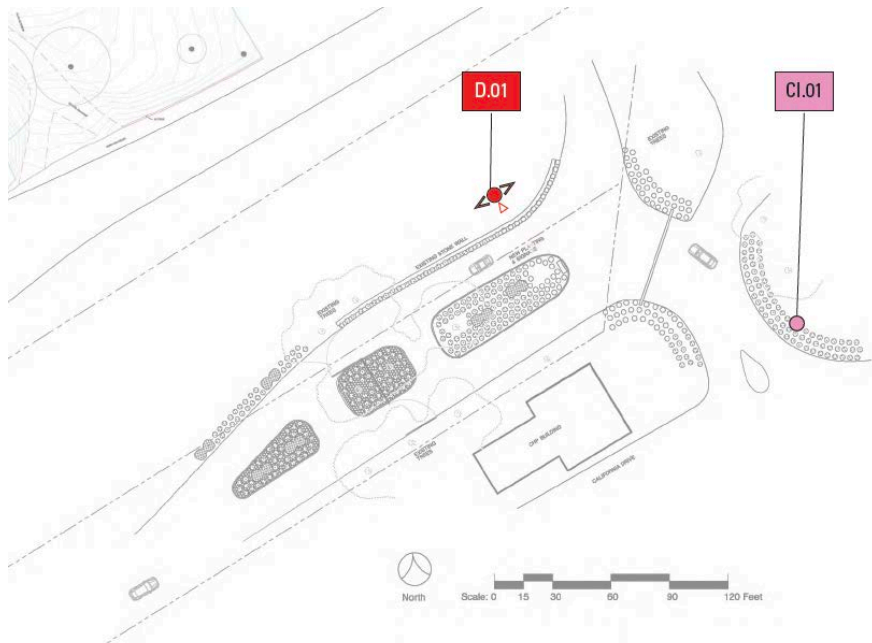
CI.03



FRONT



BACK



REMOVEABLE
MESSAGE PANELS,
FIT INTO RECESSES
IN PRECAST SLAB,
FASTENED WITH
(x2) SCREWS INTO
CONCRETE ANCHORS.

1 CI - Layouts
SCALE: 3/4" = 1'-0"

CHANDON

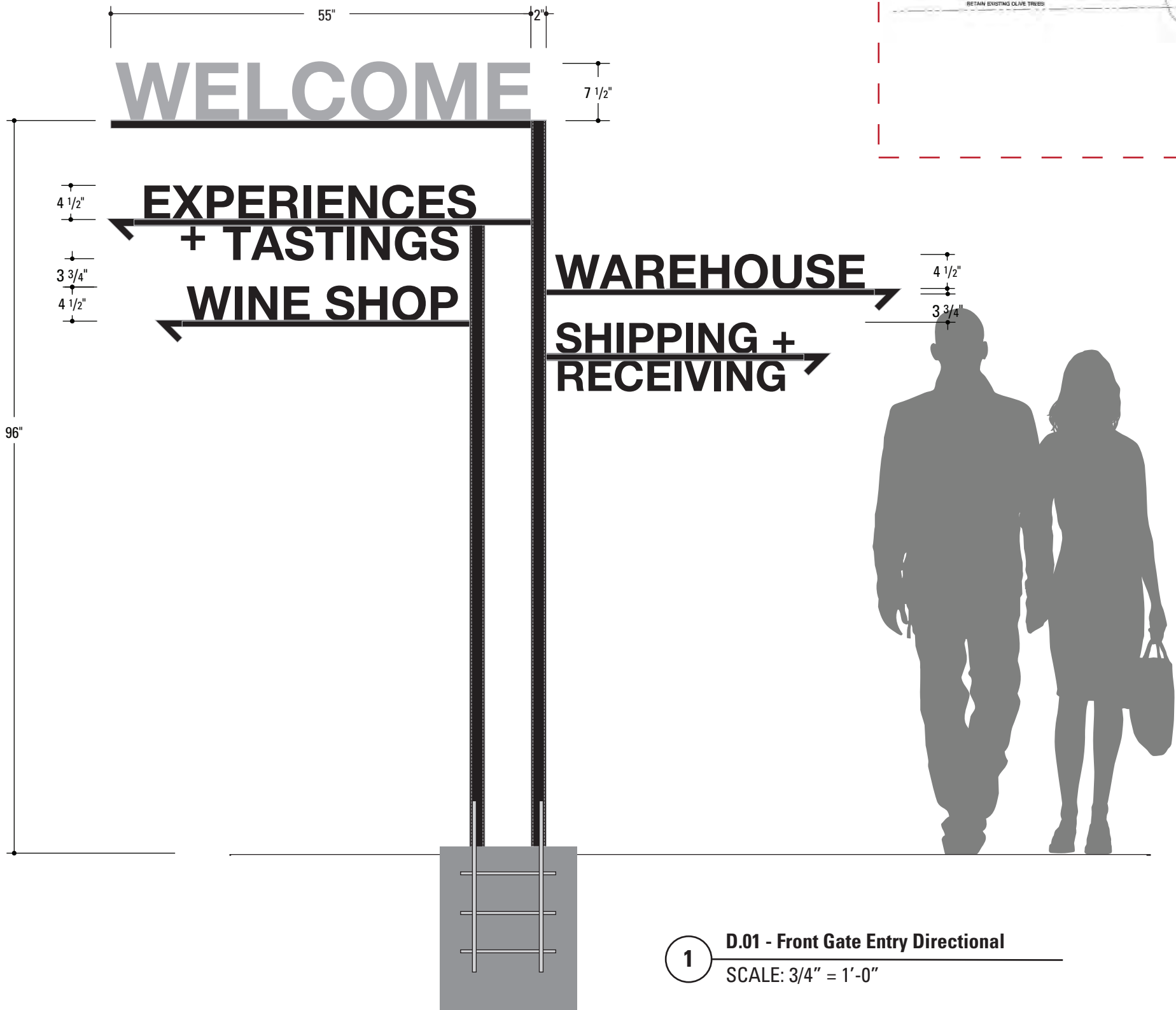
- LEGEND
- A. 3" thick Prefabricated Concrete Monument 48" x 33-3/8" with allthread protruding from bottom. Allthread to be epoxied into holes in Embedment "B"
 - B. Cast Concrete Embedment 12" x 36" x 12" deep, with holes to receive allthread from "A".
 - C. 1/4" thick Steel Letters/symbols with Blackened Finish, pin mounted to face of "A".

JOB# / PROJECT NAME	221077 - Site Signage Location Plan
SHEET TITLE:	
Concrete Informational Signs	
VERSION / DATE	
v.1.0 / 05.15.21	
v.2.0 / 06.21.21	
v.3.0 / 08.03.21	
v.4.0 / 10.15.21	
v.5.0 / 11.04.21	
v.6.0 / 12.21.21	
SCALE: As Shown	
DRAWN BY: M. Lewis	
PROJECT MGR.: K. Johnson	
SHEET:	D.02.01

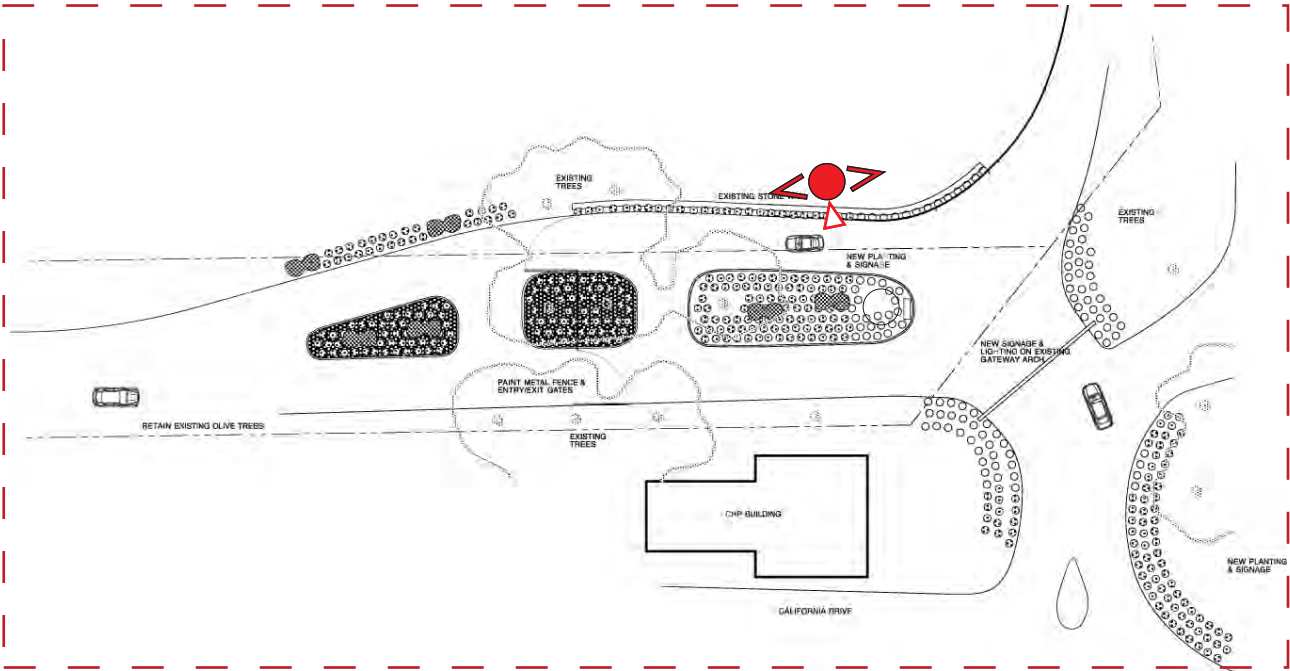
MARTINELLI ENVIRONMENTAL GRAPHICS
1829 EGBERT AVENUE | SAN FRANCISCO, CA 94124 | P: 415.468.4000 | F: 415.468.4009

LOCATION

D.01



1 D.01 - Front Gate Entry Directional
SCALE: 3/4" = 1'-0"



CLIENT

CHANDON

LEGEND

- A. Vertical Support: 2" x 3" steel tube, capped on top. Fits over Embedment "G", fastened mechanically.
- B. Header: 1" x 3" steel tube, welded to Vertical Support "A".
- C. Horizontal Supports: 1/2" steel square tube, welded to Vertical Supports "A".
- D. 1/2" thick cut alum letters, mechanically fastened to Letter Holder "E" and/or "F".
- E. Letter Holder Channel: 3/4" x 1/8" alum channel with end capped or with welded arrow. Mechanically fastened to "C".
- F. Bottom Strip: 1/8" alum strip. Mechanically fastened to "B".
- G. Embedment: Reenforced Concrete Footing with 2-1/2" Steel Square Tube protruding from top for attachment of "A"

JOB# / PROJECT NAME

221077 - Site Signage
Location Plan

SHEET TITLE:

Front Gate Entry
Directional

VERSION / DATE

v.1.0 / 05.15.21

v.2.0 / 06.21.21

v.3.0 / 08.03.21

v.4.0 / 10.15.21

v.5.0 / 11.04.21

v.6.0 / 12.21.21

SCALE: NTS

DRAWN BY: M. Lewis

PROJECT MGR.: K. Johnson

SHEET:

D.03.00

MARTINELLI ENVIRONMENTAL GRAPHICS

1829 EGBERT AVENUE | SAN FRANCISCO, CA 94124 | P: 415.468.4000 | F: 415.468.4009